

MICHAEL MALTZAN ARCHITECTURE, INC.
COWLEY REAL ESTATE PARTNERS

URBAN LAND INSTITUTE / URBAN MARKETPLACE
STAR APARTMENTS
240 E. SIXTH STREET / LOS ANGELES



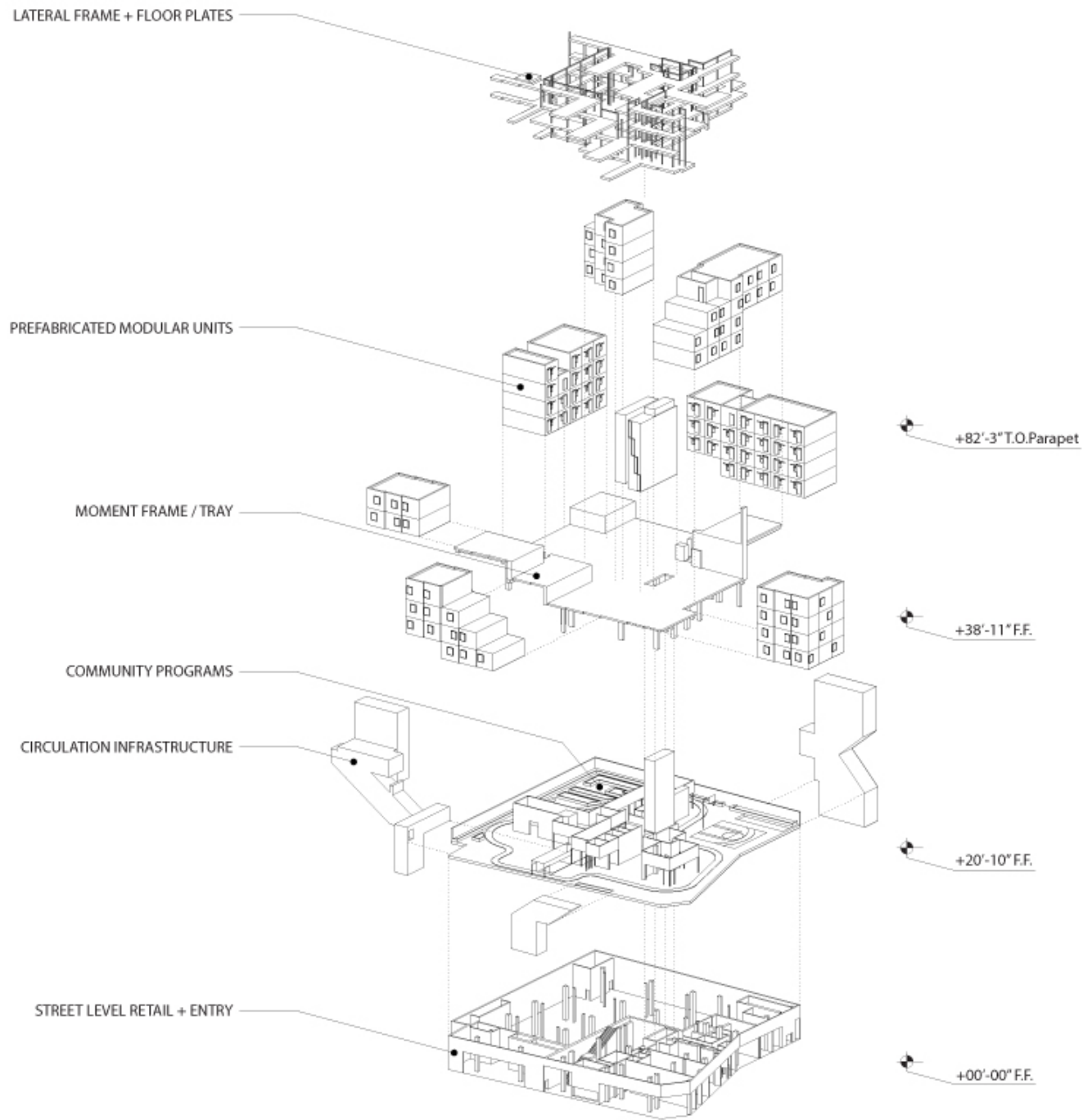
STAR APARTMENTS
6TH STRET
ELEVATION

MICHAEL COWLEY
MALTZAN REAL ESTATE
ARCHITECTURE PARTNERS



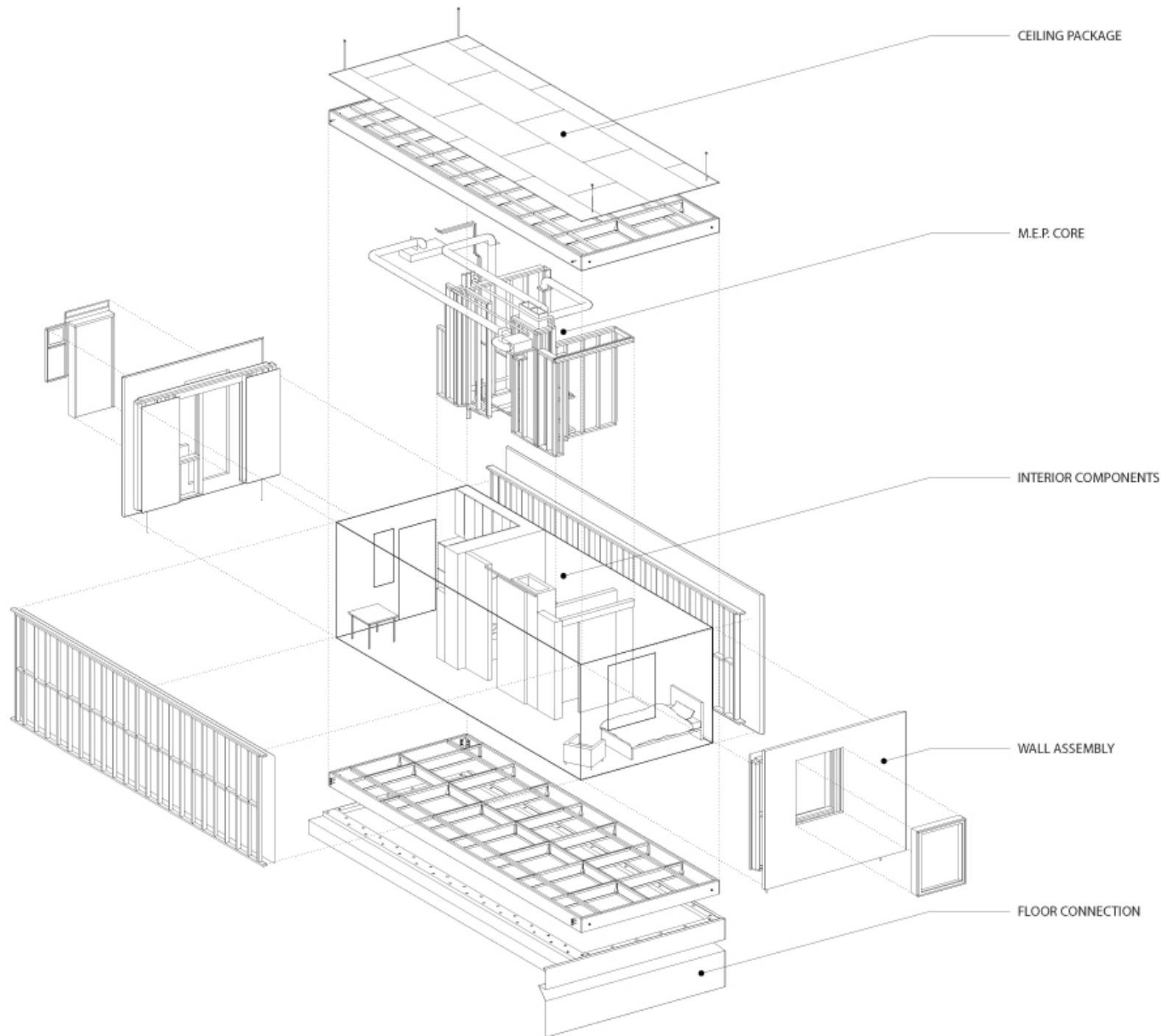
STAR APARTMENTS
NORTHWEST ELEVATION
6TH & MAPLE STREETS

MICHAEL COWLEY
MALTZAN REAL ESTATE
ARCHITECTURE PARTNERS

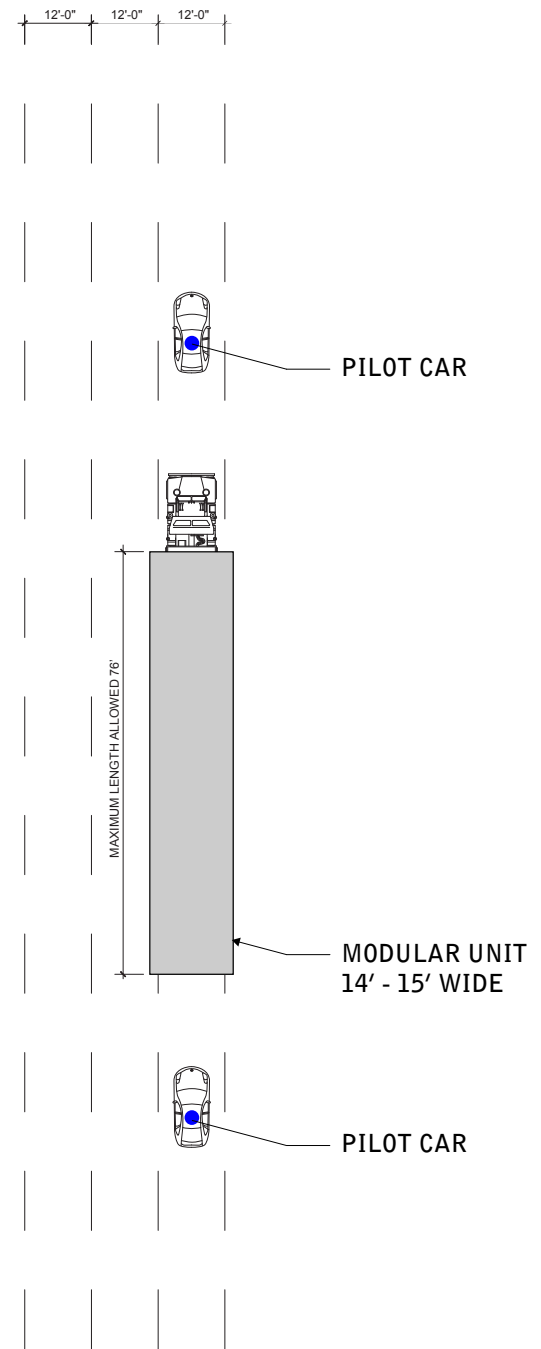
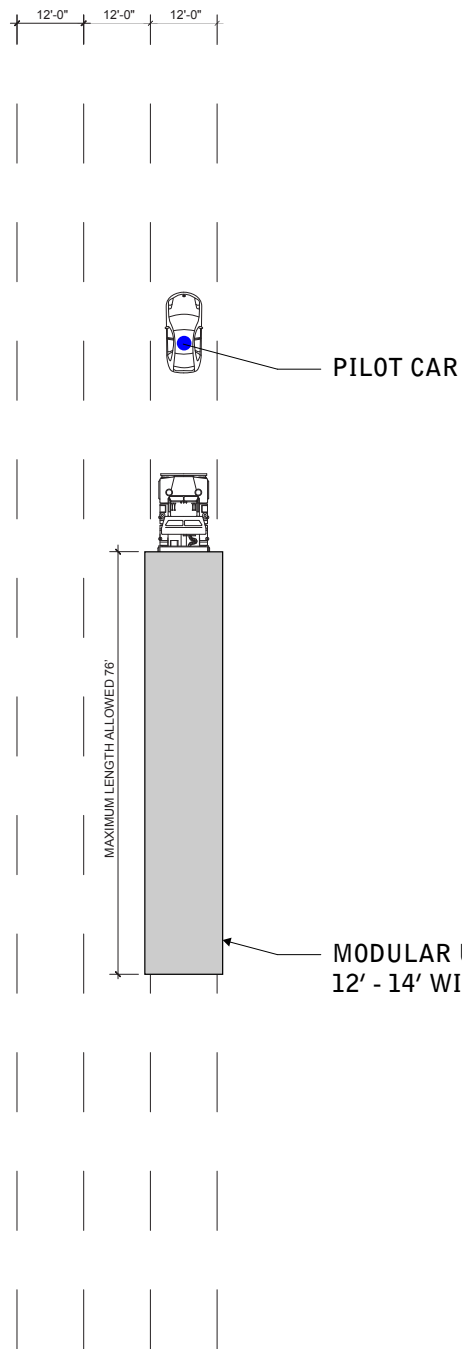
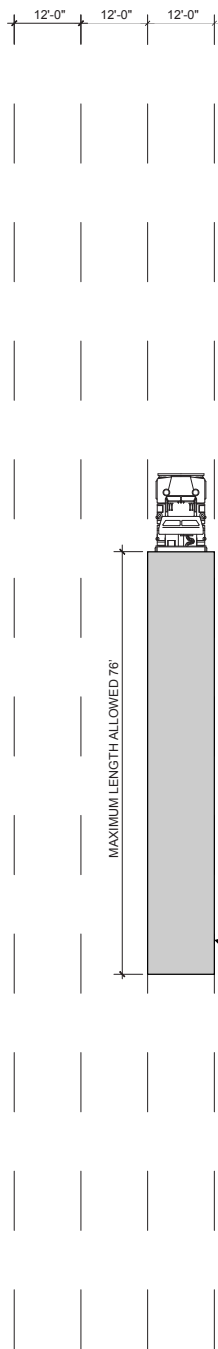


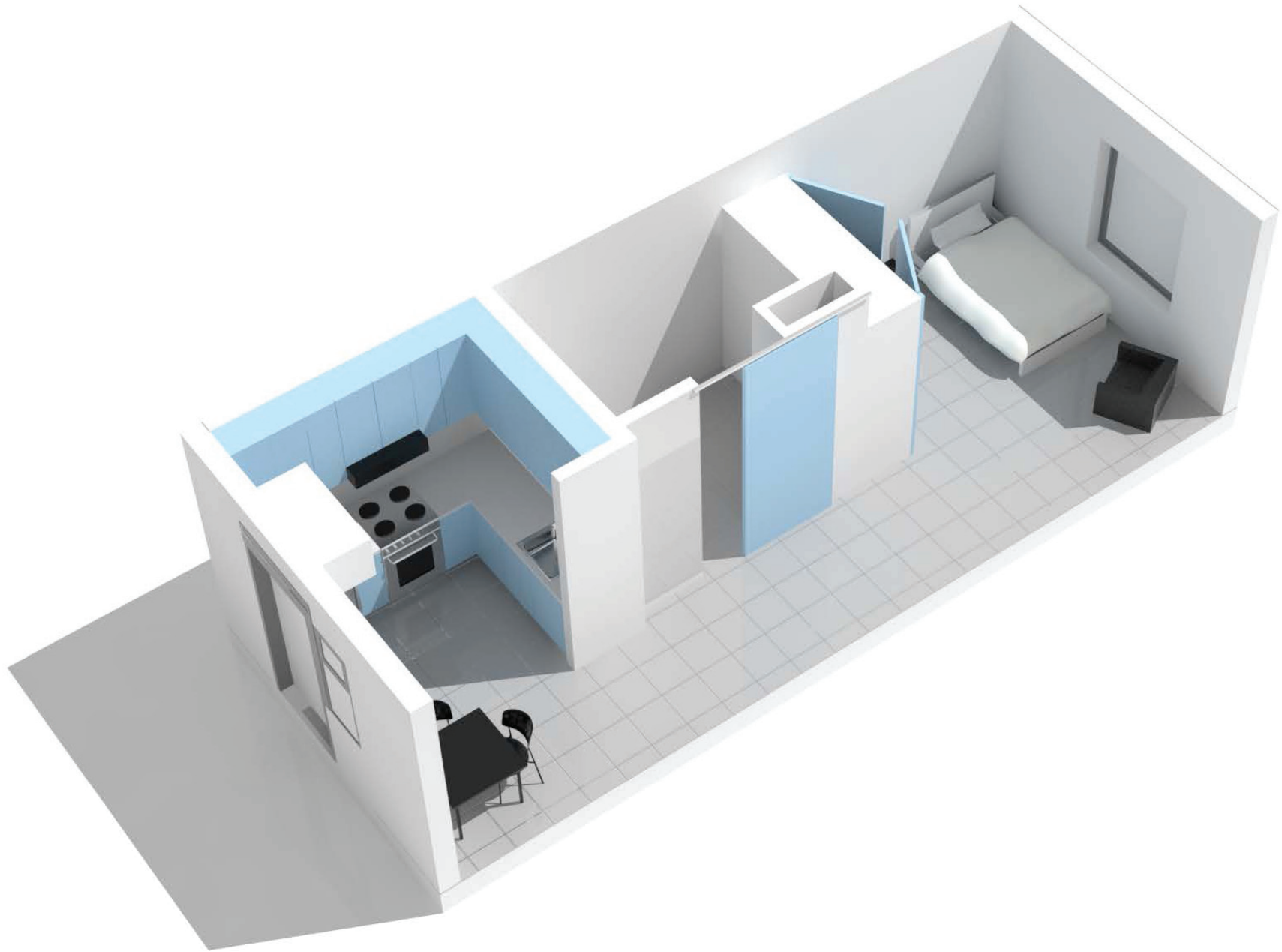
STAR APARTMENTS
OVERALL BUILDING
EXPLODED AXON

MICHAEL COWLEY
MALTZAN REAL ESTATE
ARCHITECTURE PARTNERS

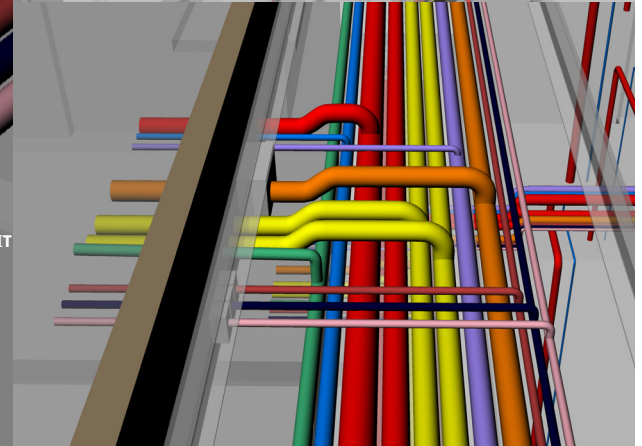
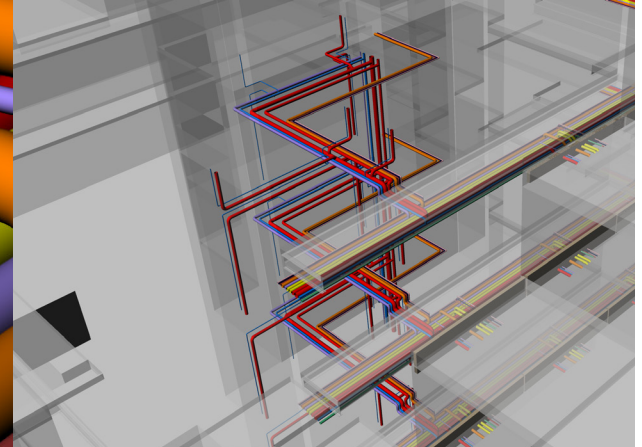
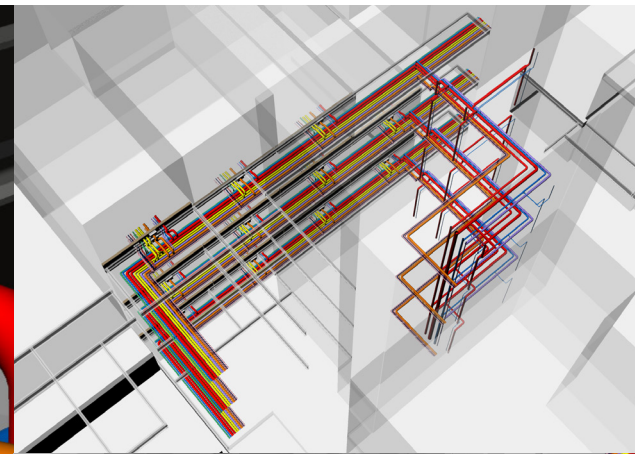
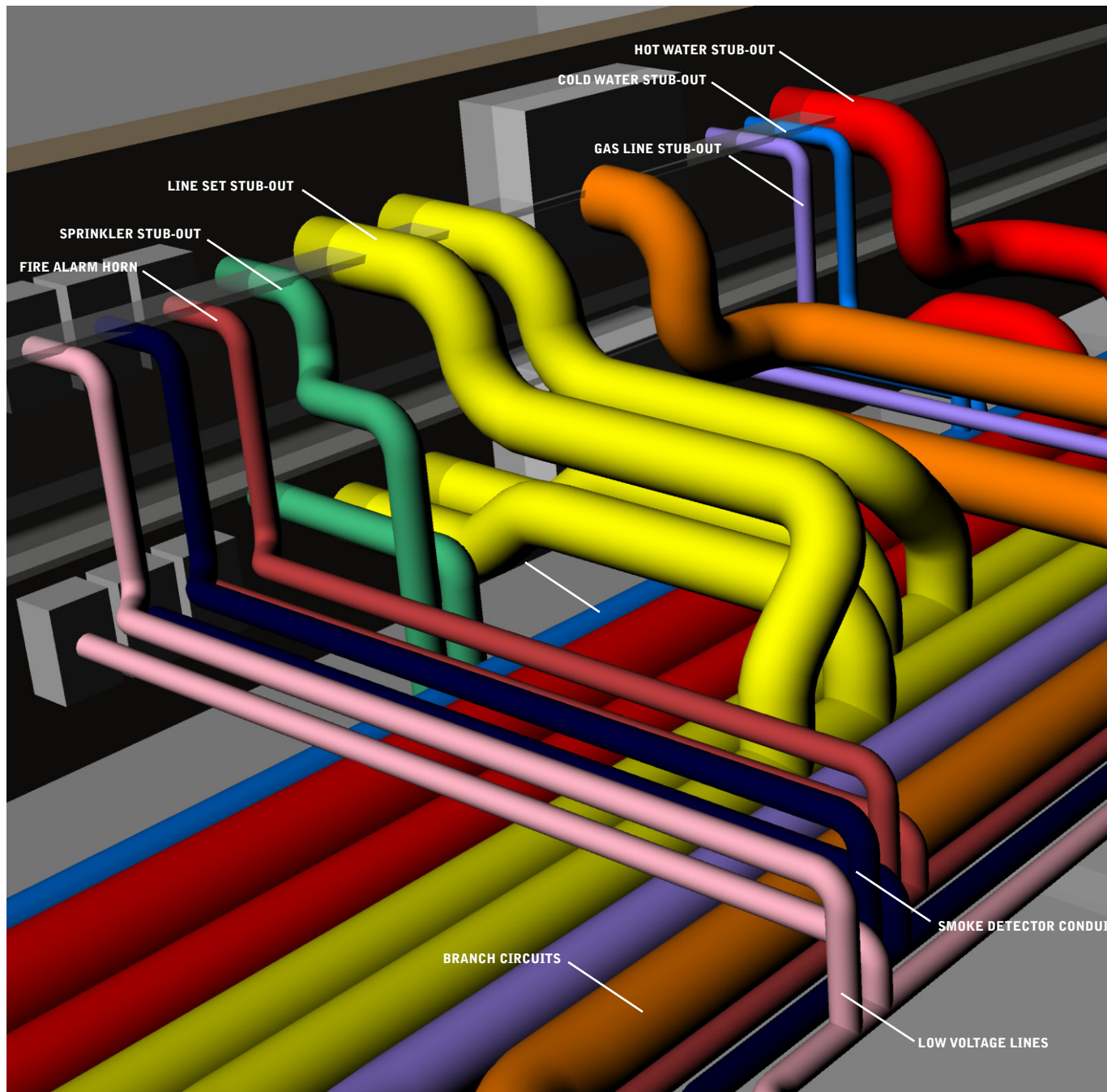


STAR APARTMENTS
TYPICAL UNIT (11.5x30'; 345 SF GROSS)
EXPLODED AXON



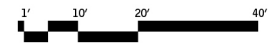
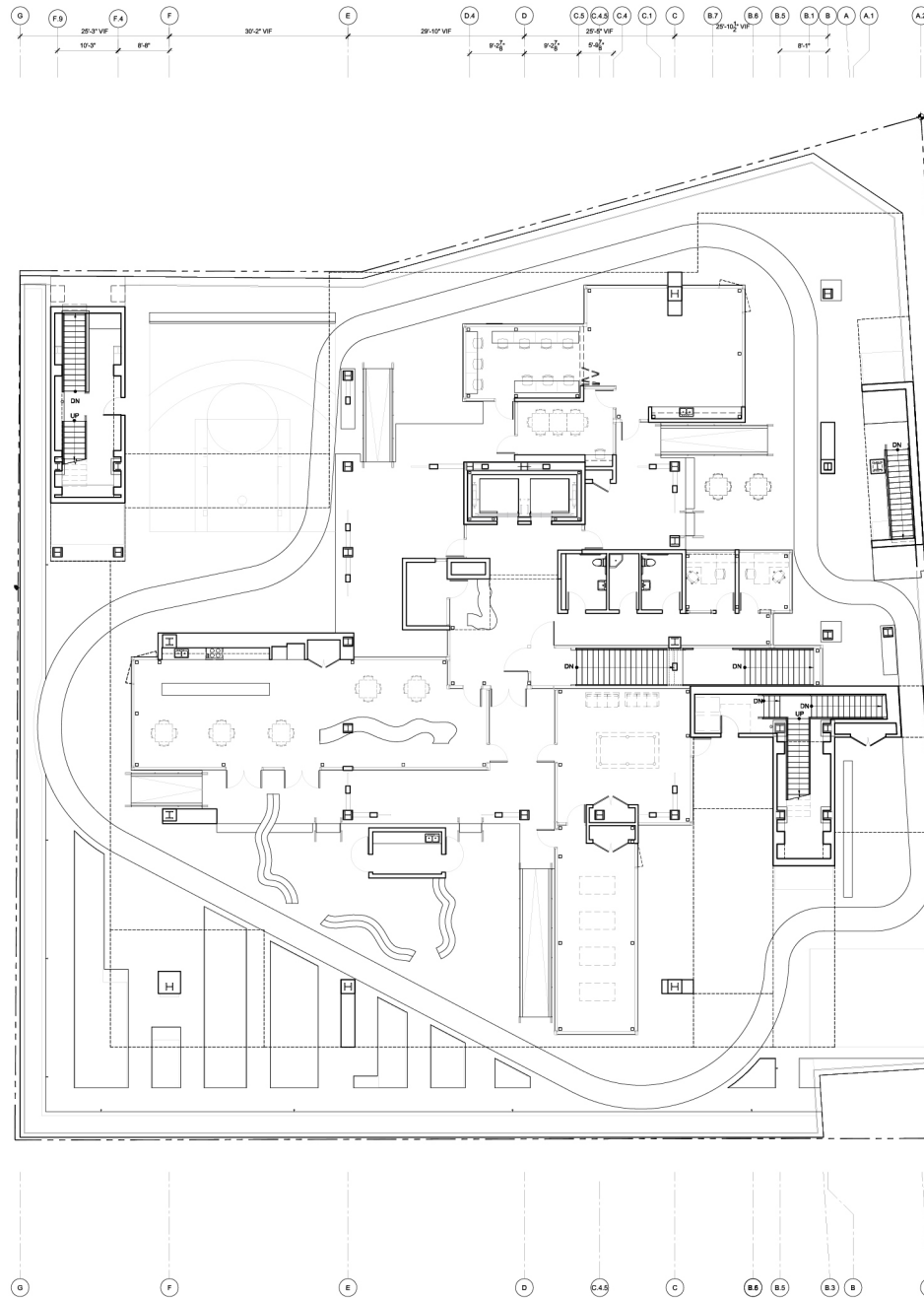


STAR APARTMENTS
TYPICAL UNIT



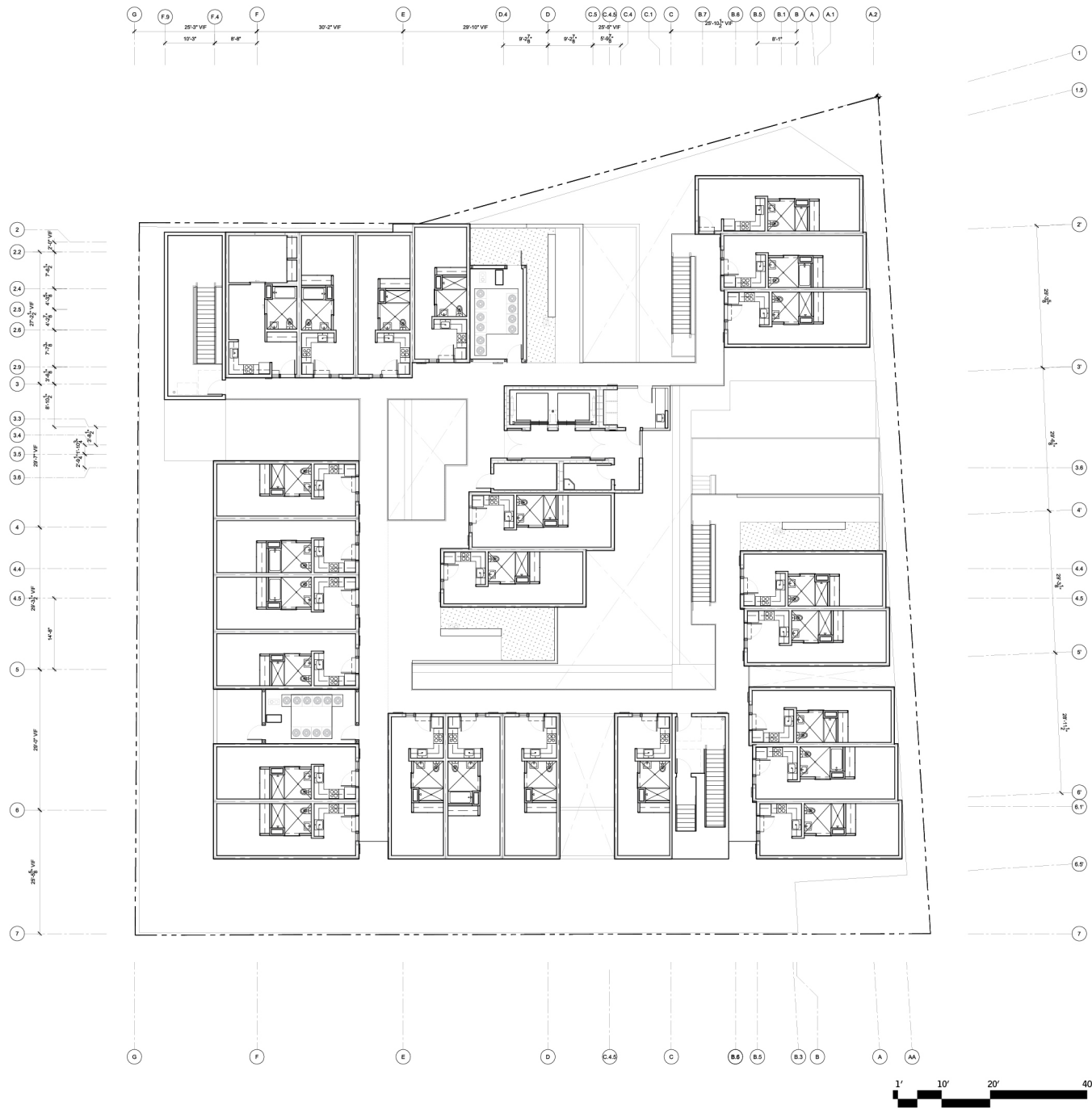
STAR APARTMENTS
UTILITY CONNECTIONS
AT UNITS

MICHAEL COWLEY
MALTZAN REAL ESTATE
ARCHITECTURE PARTNERS



STAR APARTMENTS
2ND FLOOR PLAN

MICHAEL COWLEY
MALTZAN REAL ESTATE
ARCHITECTURE PARTNERS



STAR APARTMENTS
6TH FLOOR PLAN

MICHAEL COWLEY
MALTZAN REAL ESTATE
ARCHITECTURE PARTNERS